

ABOUT GYUTAN-TAN

When it comes to beef, gyutan (牛タン) is a lesser-known cut, but one that is gaining popularity. With limited amount in each cattle, Gyutan offers a unique texture with a deep beefy flavour and chewy texture.

Our dishes are balanced out with other specialty ingredients, most notably our – mugimeshi for added fibre and nutrients, healthy sides of salad or pickles and refreshing clear broth.

Gyutan-Tan is the first beef tongue specialty restaurant in Singapore. We offer gyutan cloaked in the aromatic char from Binchotan coals.

A taste of the thickets and wilderness, paired with the exceptional flavours of gyutan, **Gyutan-Tan** provides a modern and accessible solution for our inner explorative selves that crave adventure in our everyday lives.





サラダと揚げ物



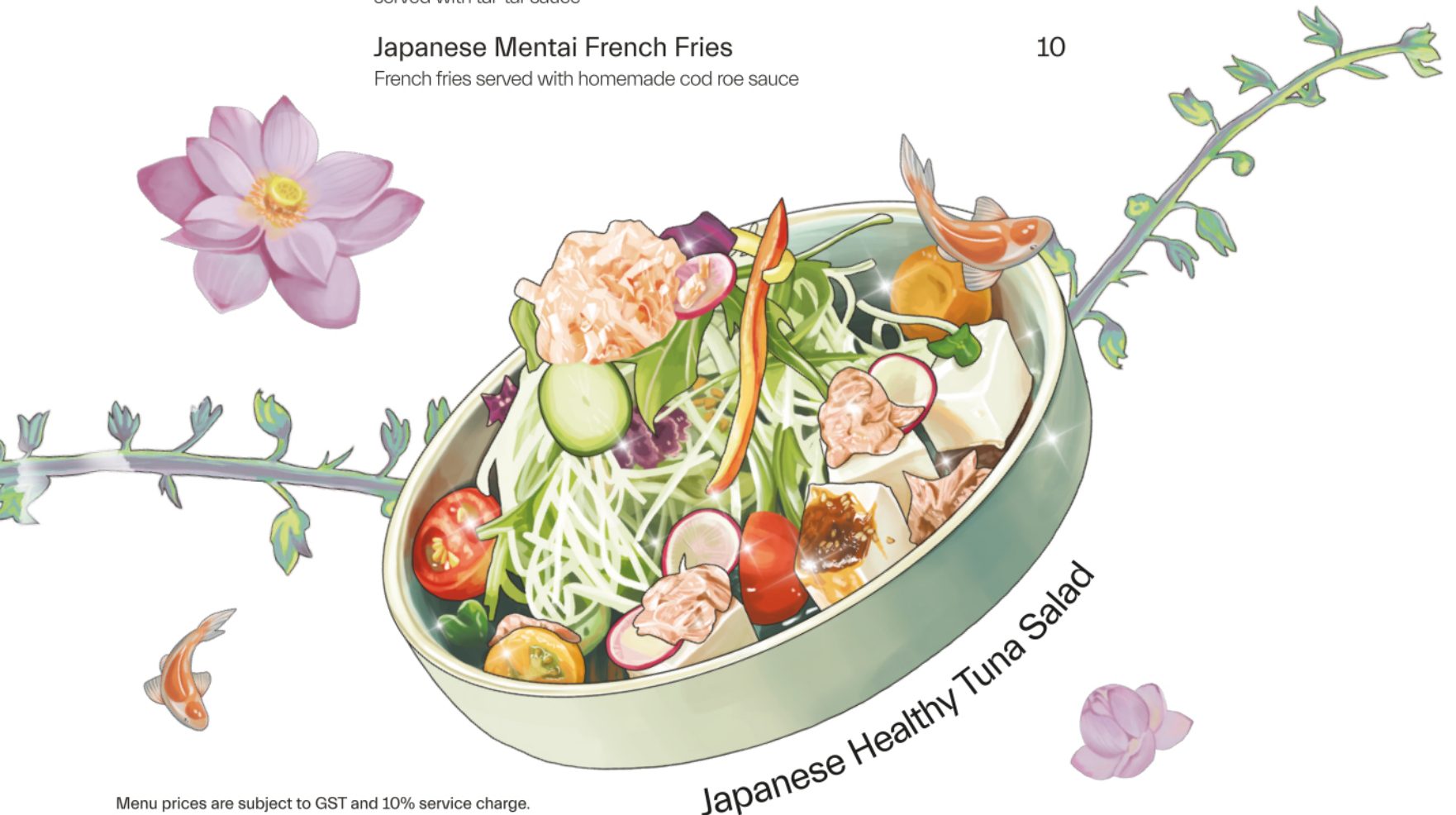
SALAD & HOT APPETIZERS

SALAD

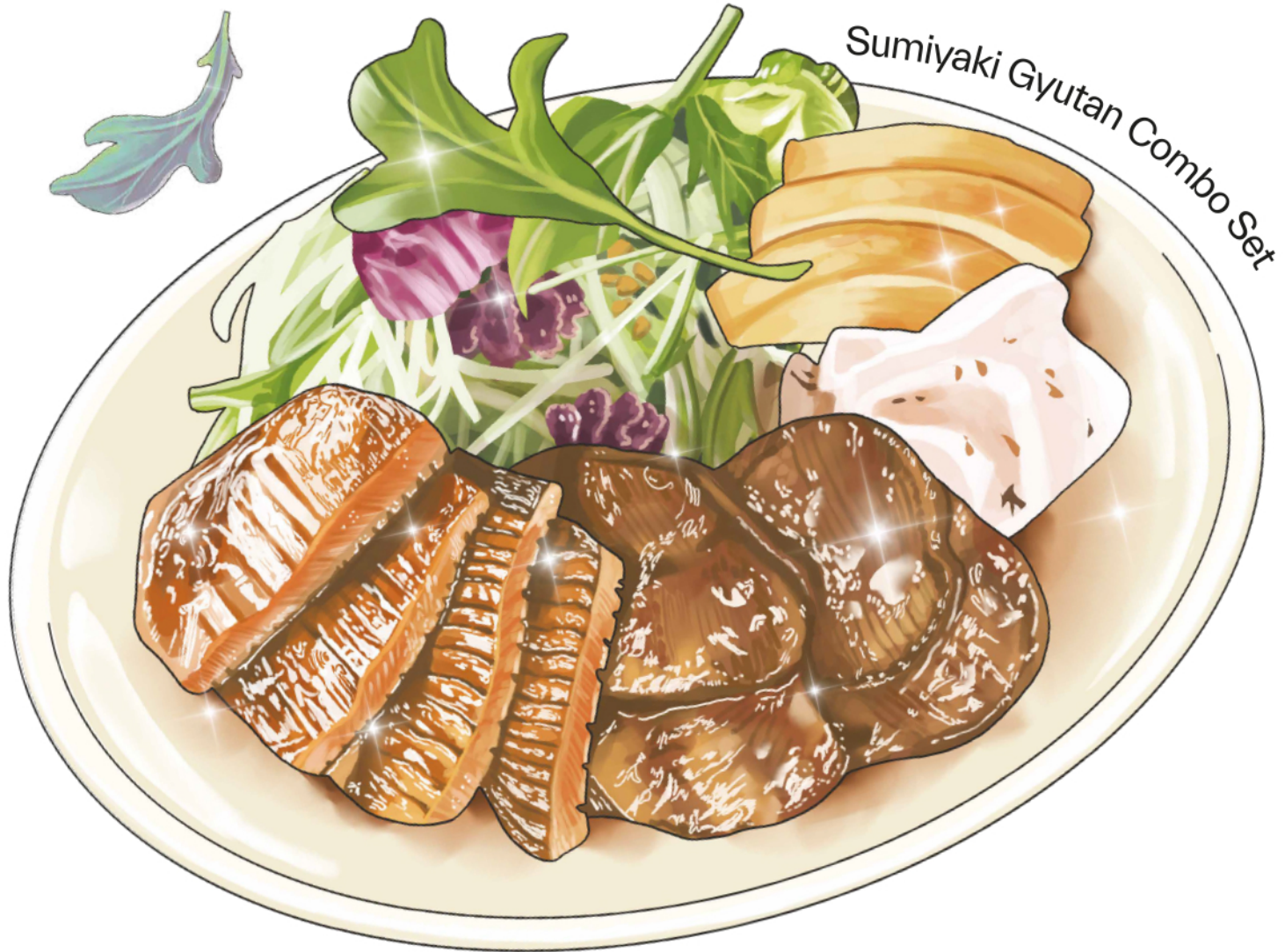
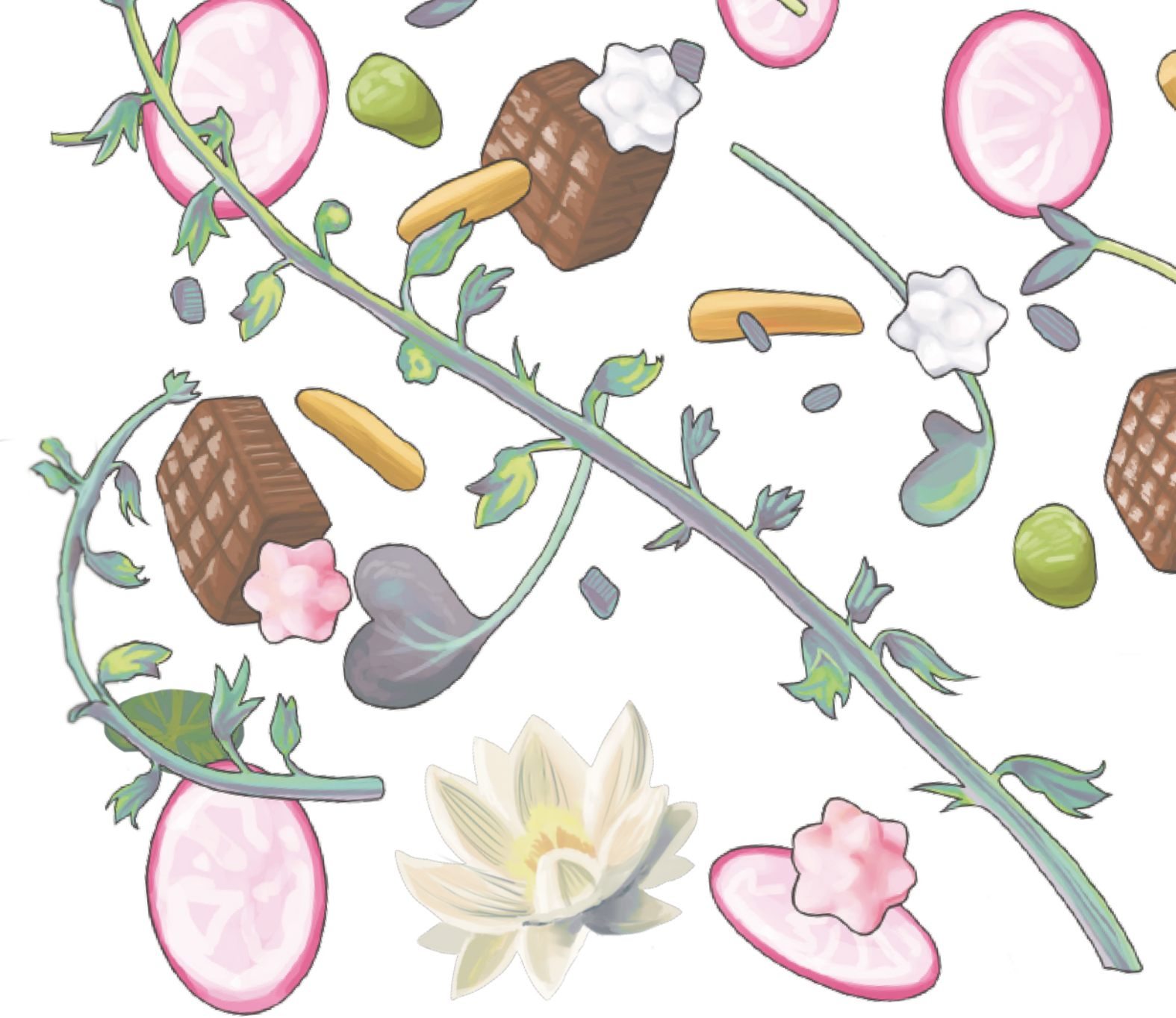
- | | |
|--|----|
| Japanese Healthy Tuna Salad | 12 |
| White radish salad, tuna chunks, healthy dressing | |
| Japanese Potato Salad with Stewed Gyutan | 12 |
| Gyutan-Tan original potato salad served with slow-cooked beef tongue | |
|  Stewed Gyutan Cobu Salad | 12 |
| Salad of lettuce topped with hard-boiled egg, avocado, cherry tomato and slow-cooked beef tongue | |
|  Cold Roasted Gyutan Carpaccio | 18 |
| Cold-roasted gyutan, balsamic glaze | |

HOT APPETIZERS

- | | |
|---|----|
|  Home-made Gyutan Gyoza (5 pcs) | 8 |
| Pan-fried dumplings stuffed with mini beef tongue chunks | |
| Hokkaido Chicken Zangi | 8 |
| Crispy and juicy fried boneless chicken | |
|  Gyutan and Hokkaido Potato Croquette | 8 |
| Deep-fried breaded roll of Hokkaido Potato and braised beef tongue served with tar-tar sauce | |
| Japanese Mentai French Fries | 10 |
| French fries served with homemade cod roe sauce | |



Japanese Healthy Tuna Salad



Sumiyaki Gyutan Combo Set







昼定食



LUNCH SET MEALS CHARCOAL SUMIYAKI SET

SERVED WITH MUGIMESHI, PICKLES, SOUP, SALAD & TORORO

 Combo Gyutan Charcoal-grilled, mixed-cut beef tongue (Premium & regular-cut)	30	
Gyutan Charcoal-grilled, regular-cut beef tongue	28	
Premium Gyutan Charcoal-grilled, premium-cut beef tongue	34	
Gyutan and Beef Karubi Charcoal-grilled, combination of regular-cut beef tongue and beef short rib	26	
Beef Striploin Charcoal-grilled beef striploin steak	32	
Gyutan and Tontoro Charcoal-grilled, combination of regular-cut beef tongue and pork jowl	26	
 Pork Loin and Tontoro Charcoal-grilled, combination of pork loin and pork jowl	24	
Pork Loin Charcoal-grilled pork loin	24	
 Japanese A3 Wagyu and Premium Gyutan Charcoal-grilled, combination of premium Japanese wagyu beef and premium-cut beef tongue	58	





昼定食



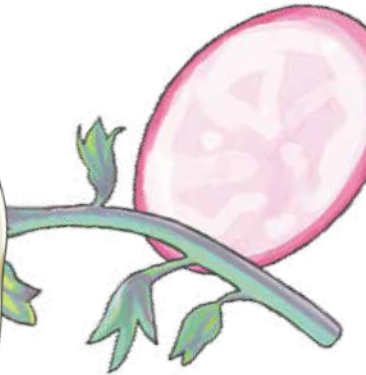
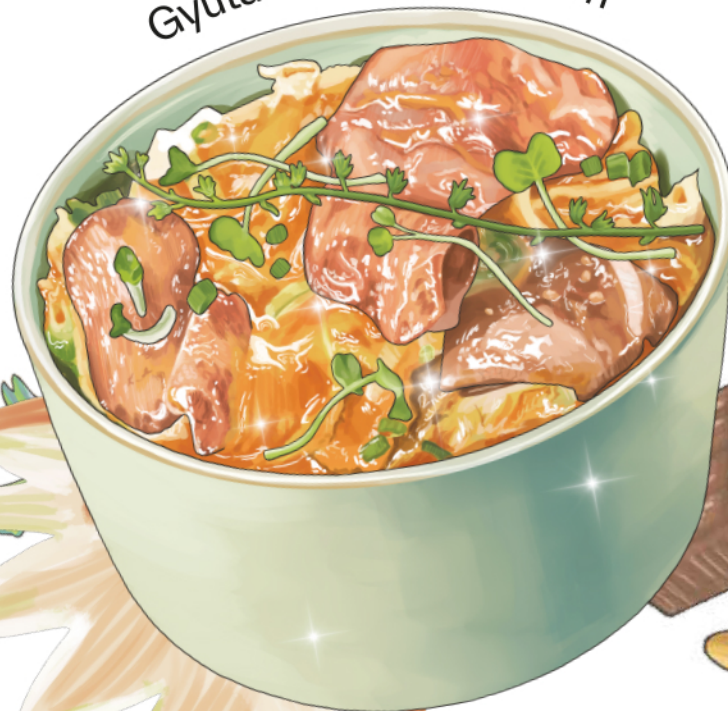
LUNCH SET MEALS DON SET

SERVED WITH 3-KIND DAILY APPETIZERS, PICKLES, SOUP & SALAD

	Gyutan-Tan Don Combination of beef short rib and beef tongue slices simmered in special sauce served on rice	26
	Spicy Gyutan Don Slices of beef tongue pan-fried with special spicy sauce served on rice	28
	Gyutan Tamago-toji Don Beef tongue slices simmered in dashi broth topped with egg and served on rice	28
	Pork Tonteki Don Pan-fried pork loin with garlic and butter brown sauce served on rice	24
	Chicken Oyako Don Chunks of chicken thigh and egg simmered in dashi broth served on rice	22
	Teriyaki Chicken Don Authentic Japanese sweet and savory grilled chicken thigh served on rice	22



Gyutan Tamago-toji Don





昼定食



LUNCH SET MEALS CURRY AND STEW SET

CURRY SET SERVED WITH PICKLES, SOUP & SALAD

-  **Pork Katsu Curry** 24
Crispy breaded pork loin served with Gyutan-Tan homemade curry
- Gyutan Curry** 26
Braised beef tongue in Gyutan-Tan homemade curry
-  **Gyutan Hamburg Curry** 26
Beef tongue patty served in Gyutan-Tan homemade curry
- Vegetable Curry (V)** 18
Assorted vegetables served with Gyutan-Tan homemade curry



STEW SET SERVED WITH PICKLES, SOUP & SALAD

-  **Gyutan Hamburg Demi-Glace Stew** 26
Beef tongue patty served in a claypot of rich brown sauce
- Gyutan Demi-Glace Stew** 26
Slow-cooked beef tongue served in a claypot of rich brown sauce
- Vegetables Tomato Nabe (V)** 20
Assorted vegetables served in a claypot of Japanese tomato stew
-  **Pork Kakuni Stew** 24
8-hour-braised pork belly stew



Menu prices are subject to GST and 10% service charge.
Pictures shown are for illustrative purposes



アドオン



ADD - ONS

Mugimeshi Set 5
Mugimeshi, Pickles and Soup

Mugimeshi 2
Healthy steamed barley-rice combination

Assorted 2-kind Japanese Vegetable Pickles 2
Gyutan-Tan house-made pickles

Tororo 2
Grated Japanese Mountain Yam



Onsen Egg 2
Soft-boiled egg

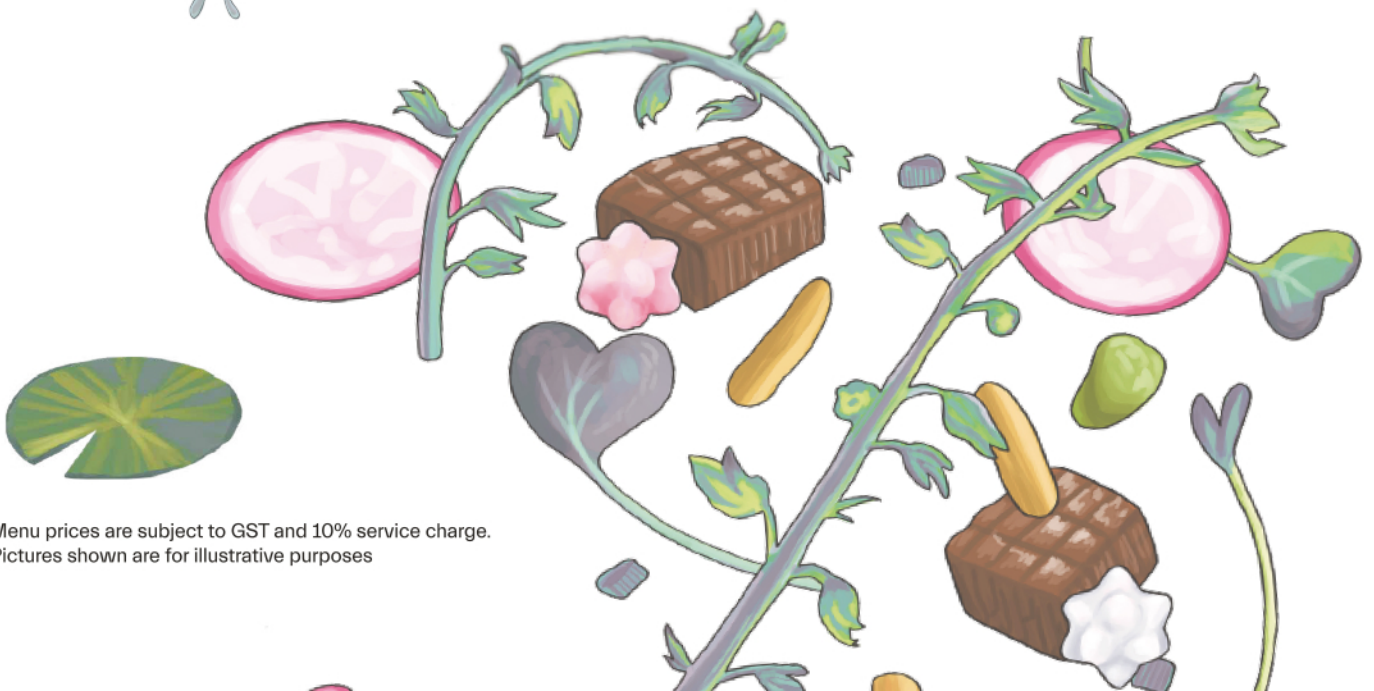
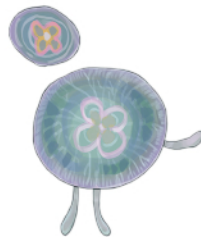
Oxtail Soup 2
Signature oxtail soup



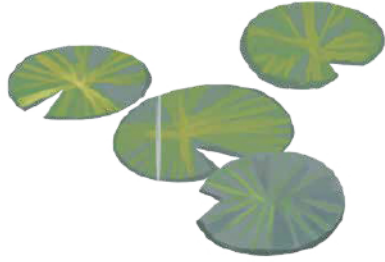
Miso Soup 2
Traditional Japanese Soup

Mixed Greens 4
Mesclun

Gyutan-Tan Special Sauces 1
Original. Ponzu Oroshi. Korean. Negi Shio. Lemon Pepper






Menu prices are subject to GST and 10% service charge.
Pictures shown are for illustrative purposes



デザート

DESSERTS



- | | | |
|---|---|----|
| | Japanese Seasonal Parfait
Vanilla ice-cream and whipped cream served with a selection of Japanese seasonal fruits | 22 |
|  | Matcha Affogato
Traditional matcha served with warabimochi, Okinawa brown sugar and vanilla ice-cream | 12 |
|  | Japanese Tiramisu Parfait
Layers of whipped mascarpone and coffee jelly topped with dango and vanilla ice-cream | 12 |
| | Strawberry Zenzai
Grilled mochi and monaka wafers served with strawberry ice-cream and strawberry puree | 14 |
| | Peachy White Chocolate Mousse
White chocolate mousse served on top of a white peach filling | 12 |
| | Seasonal Fruits Shingen Mochi
Rain drop jelly cake served with Japanese seasonal fruits, kinako and Okinawa brown sugar | 12 |
|  | Home-made Egg Pudding
Steamed pudding of milk, egg and vanilla bean finished with caramel sauce | 8 |
| | Seasonal Fresh Fruits Sando
Premium white bread served with whipped cream and Japanese seasonal fruits | 8 |
| | Ice cream
(Hokkaido Vanilla. Kurogoma. Yuzu. Matcha. Strawberry. White peach) | 5 |

